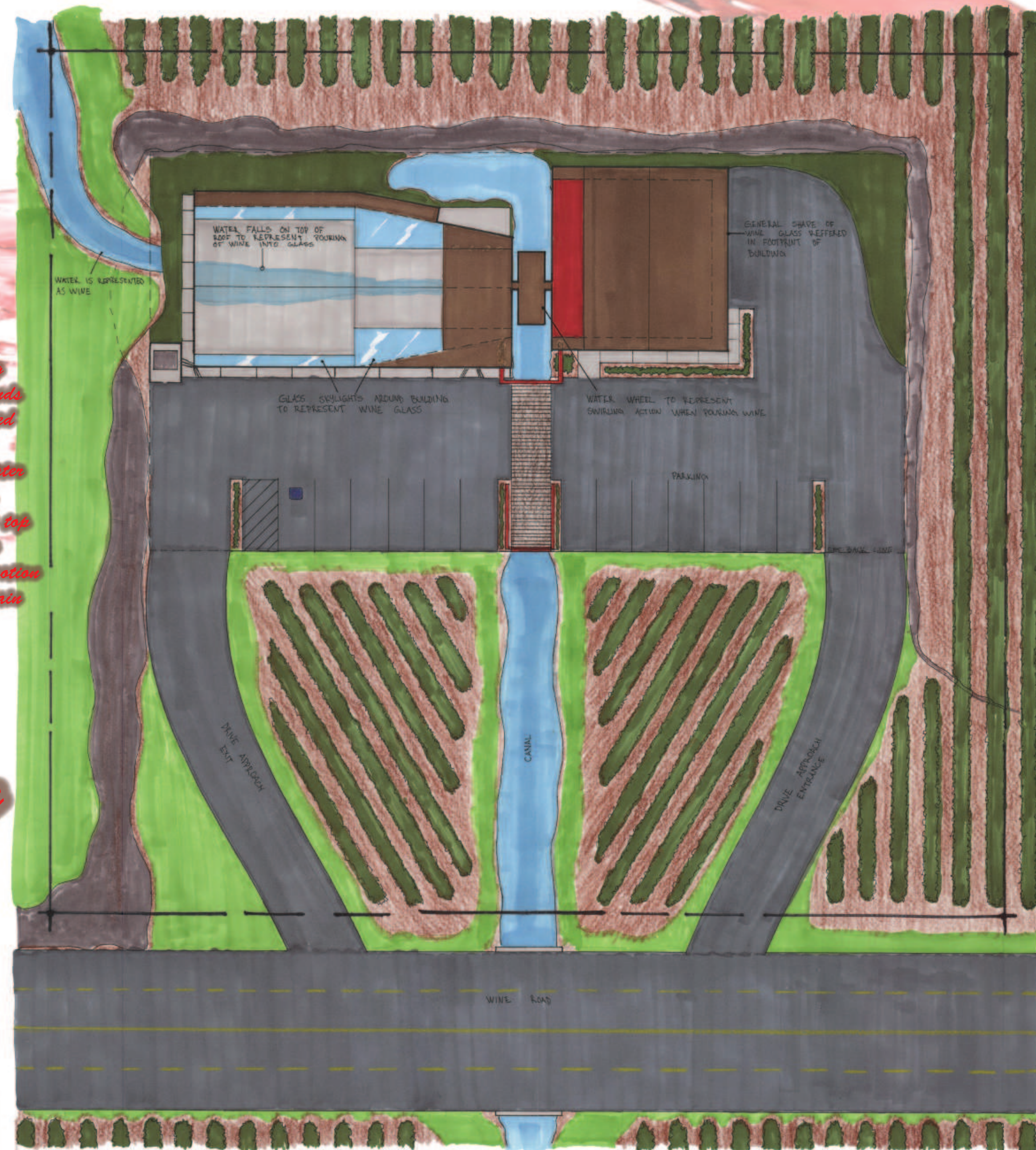


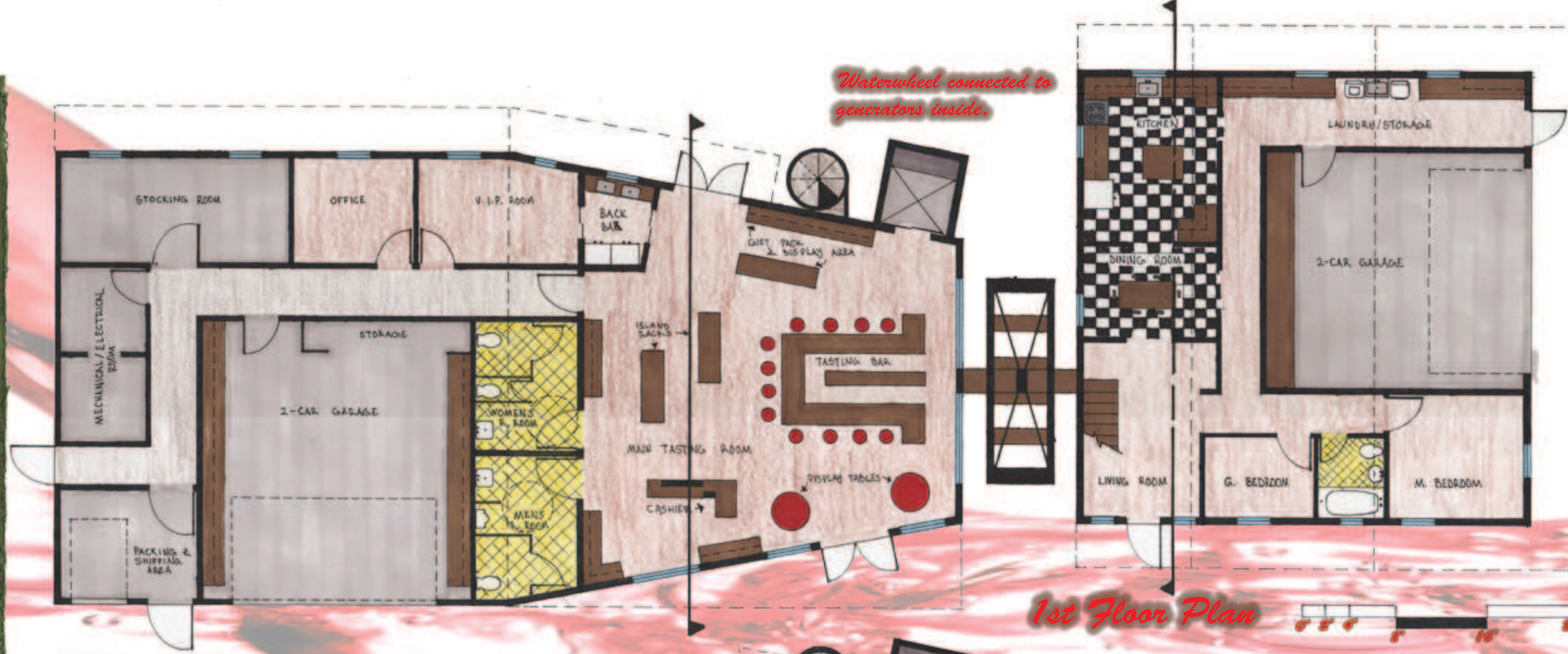
Concept Diagram



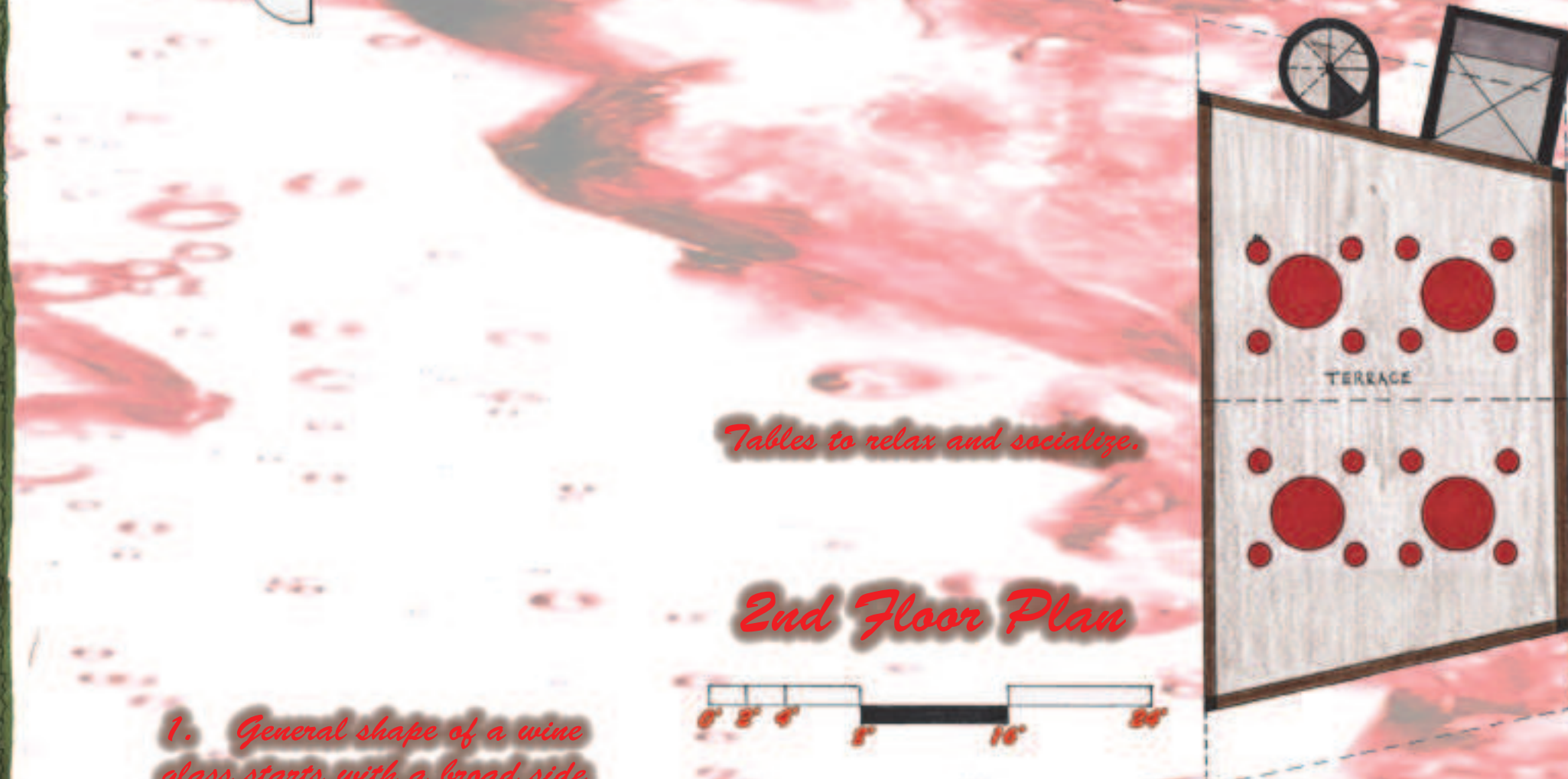
My concept is based upon the action of pouring wine into the glass. As you pour the wine it tends to swirl inside creating a circular motion. I used this observation and came up with buildings shaped like a wine glass on its side. I used water that falls off a mountain to represent the wine. The water that falls off the mountain lands on top of the main tasting facility and travels its way down to the waterwheel, making it move. The motion of the circular spin represents the swirl you attain when pouring wine into the glass.



Site Plan



1st Floor Plan



2nd Floor Plan

1. General shape of a wine glass stands with a broad side on top (wine glass on its side)

Angled roof to direct water (wine) down to the waterwheel

2. Middle of wine glass is narrower as it progresses down

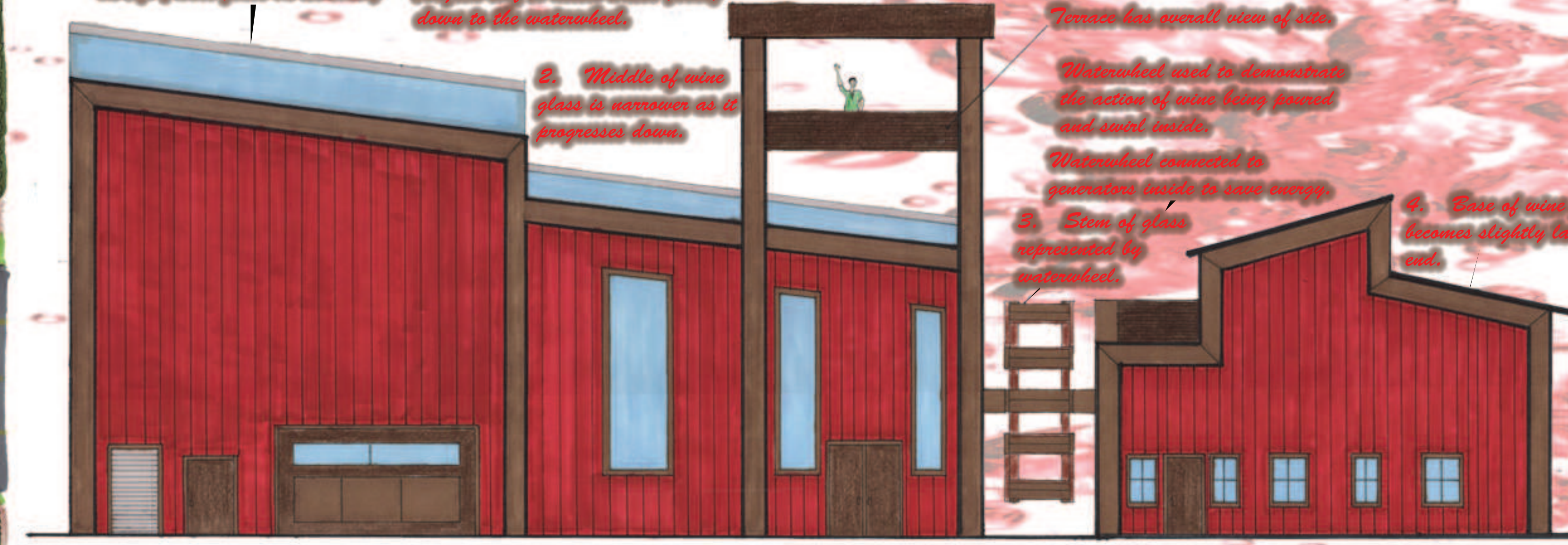
Terrace has overall view of site

Waterwheel used to demonstrate the action of wine being poured and used inside

Waterwheel connected to generator inside to save energy

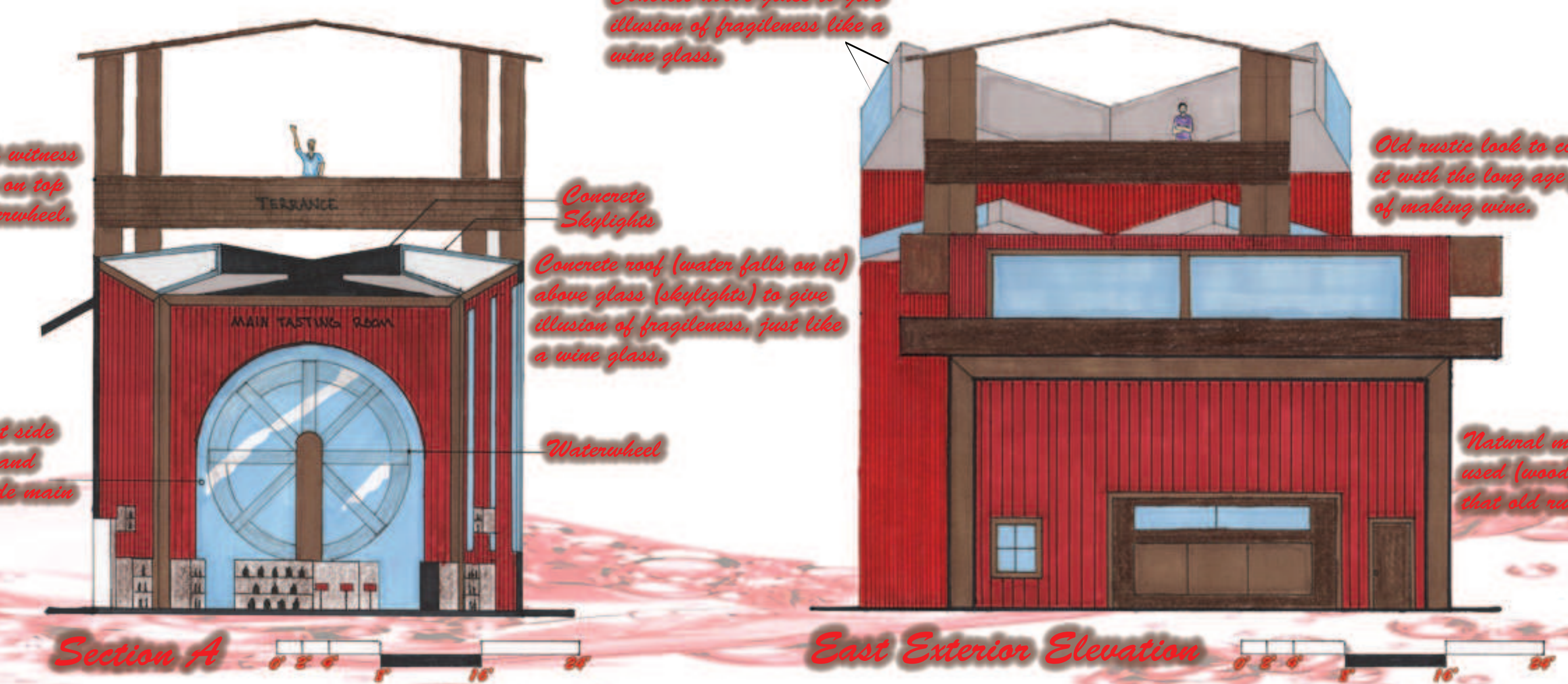
3. Side of glass represented by waterwheel

4. Base of wine glass becomes slightly larger at the end

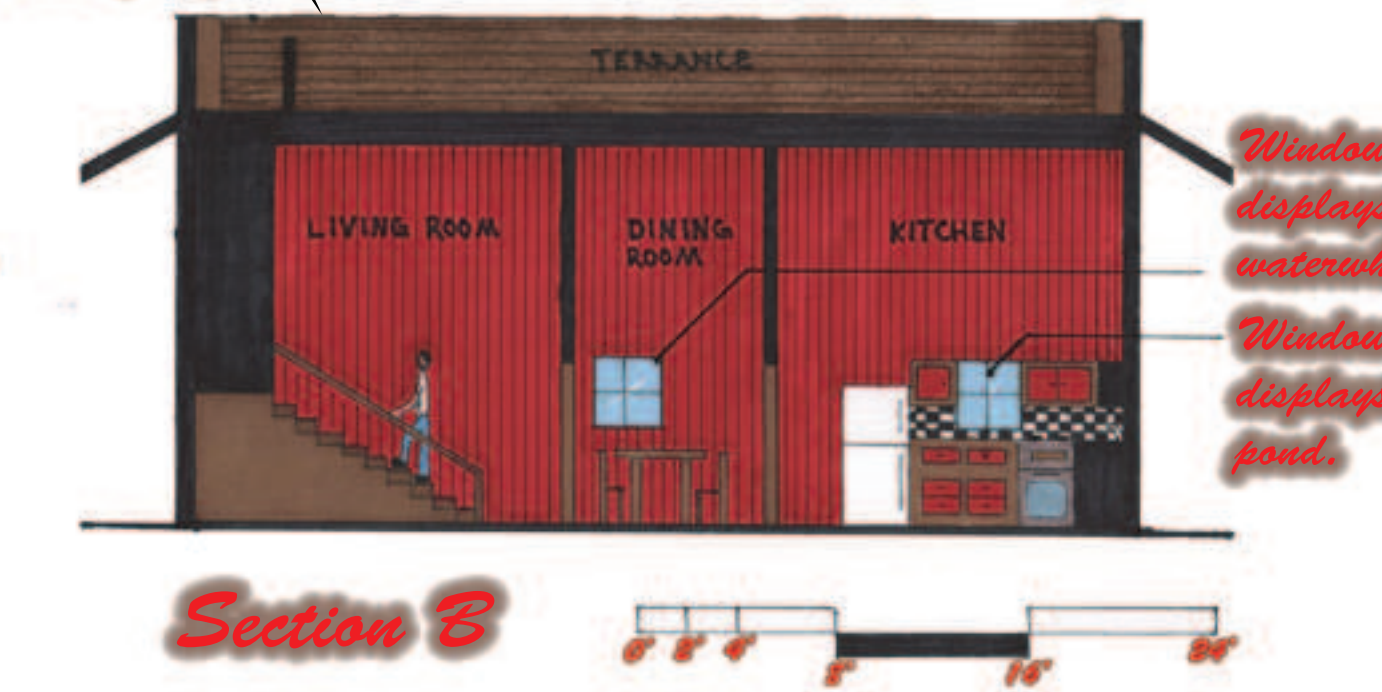


South Exterior Elevation

Wine Tasting Facility & Caretaker's Unit



East Exterior Elevation



Section B



Perspective

AIASJ Student Design Competition



Model

